

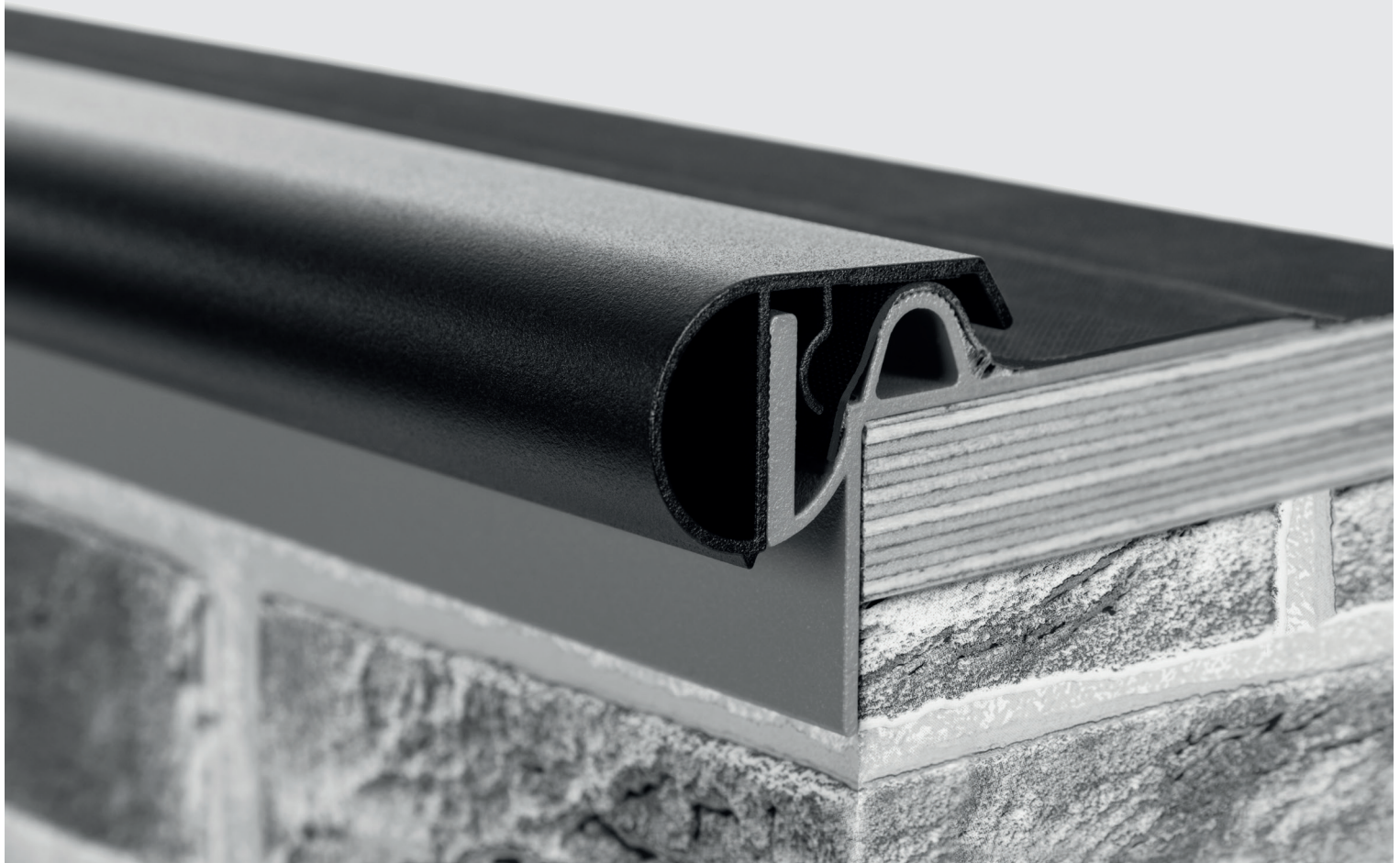
**iconik**<sup>®</sup>

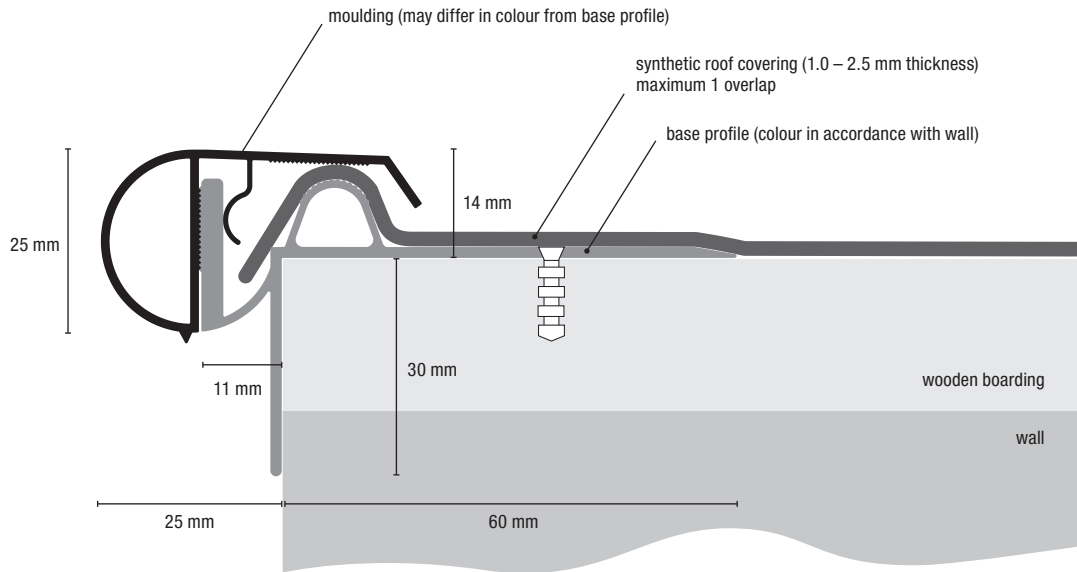
BY CLAERHOUT ALUMINIUM

2-part aluminium roof edge system  
(round bead 25 mm in height)

**TECHNICAL DATA SHEET**

v2020.02





## DESCRIPTION

Comprises:

- Base profile with 30 mm vertical side cover underneath to cover the wooden boarding. Aluminium version featuring a 60 mm effective bearing surface with pre-punched 6 x 16 mm oval holes. The base profile always comes in a standard 3,000 mm length.
- Semi-circular moulding in stove-enamelled aluminium with a height of 25 mm and a wall thickness of 1.2 mm, fitted with tensioning ribs to ensure optimum clamping of the roof covering.
- 90° corner pieces (both outside and inside corners) measuring 500 mm by 500 mm made from semi-circular aluminium mouldings.
- Easy corner accessory (80/80 mm effective) slides into the base profile at the corners for an optimum connection.
- 50 mm long joint clips to ensure a watertight joint finish.

## APPLICATION

The Iconik roof edge system is suitable for synthetic roof coverings with thicknesses ranging from 1.0 mm to a maximum of 2.5 mm. Max. 2 -layer thicknesses with overlaps.

## INSTALLATION

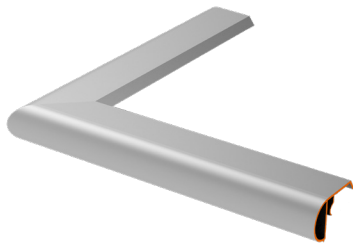
1. Screw on the base profile (figure 2). Use the pre-punched oval fixing holes spaced every 300 mm. Always leave an expansion joint of 3 mm between the base profiles.
2. Use the bumper to align the base profile with the existing cavity seal.
3. At the corners, slide the easy corner attachment into the 2 base profiles to create the corner (figure 2).
4. Glue the roof covering to the base profile. Max 2-layer thicknesses in case of overlaps
5. Push the moulding (figure 4) from top to bottom to secure the roof covering (press firmly). Do not use pieces smaller than 1 m. Ensure a 3 mm expansion joint. Position the corners on the ends and then push the corner piece downwards. Interrupt the moulding and base profile +/- every 6 m in the same place with a 3 mm joint for the longitudinal expansion.
6. For expansion joints, apply a line of flexible sealant on both sides of the mouldings and clips, then the joint clips (figure 3) centred on the seam.

## ALUMINIUM FINISH

All RAL colours are available.

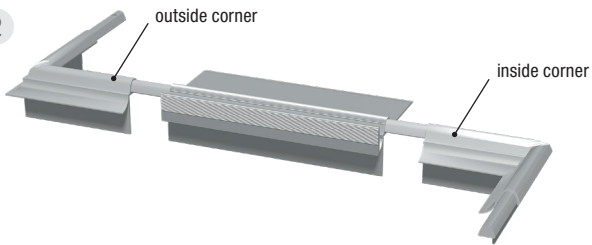


1



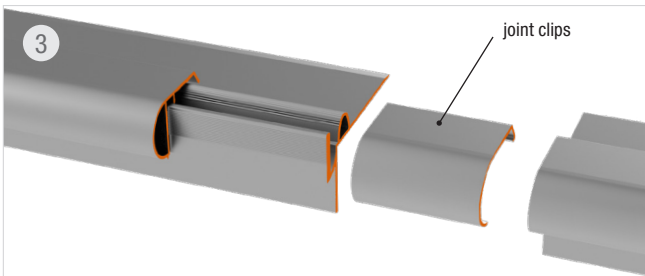
moulding – outside corner 500x500 mm

2



base profile with easycorner

3



4



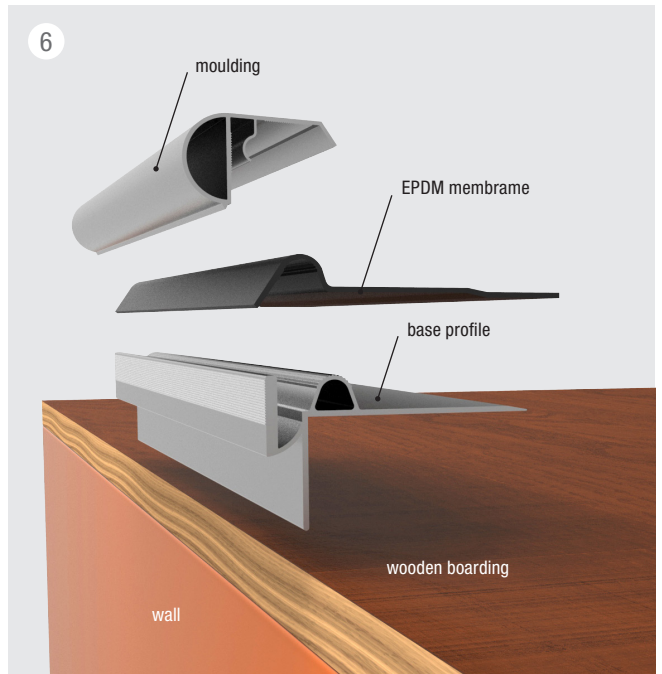
installing moulding

5



vertical cross section

6



exploded view

