

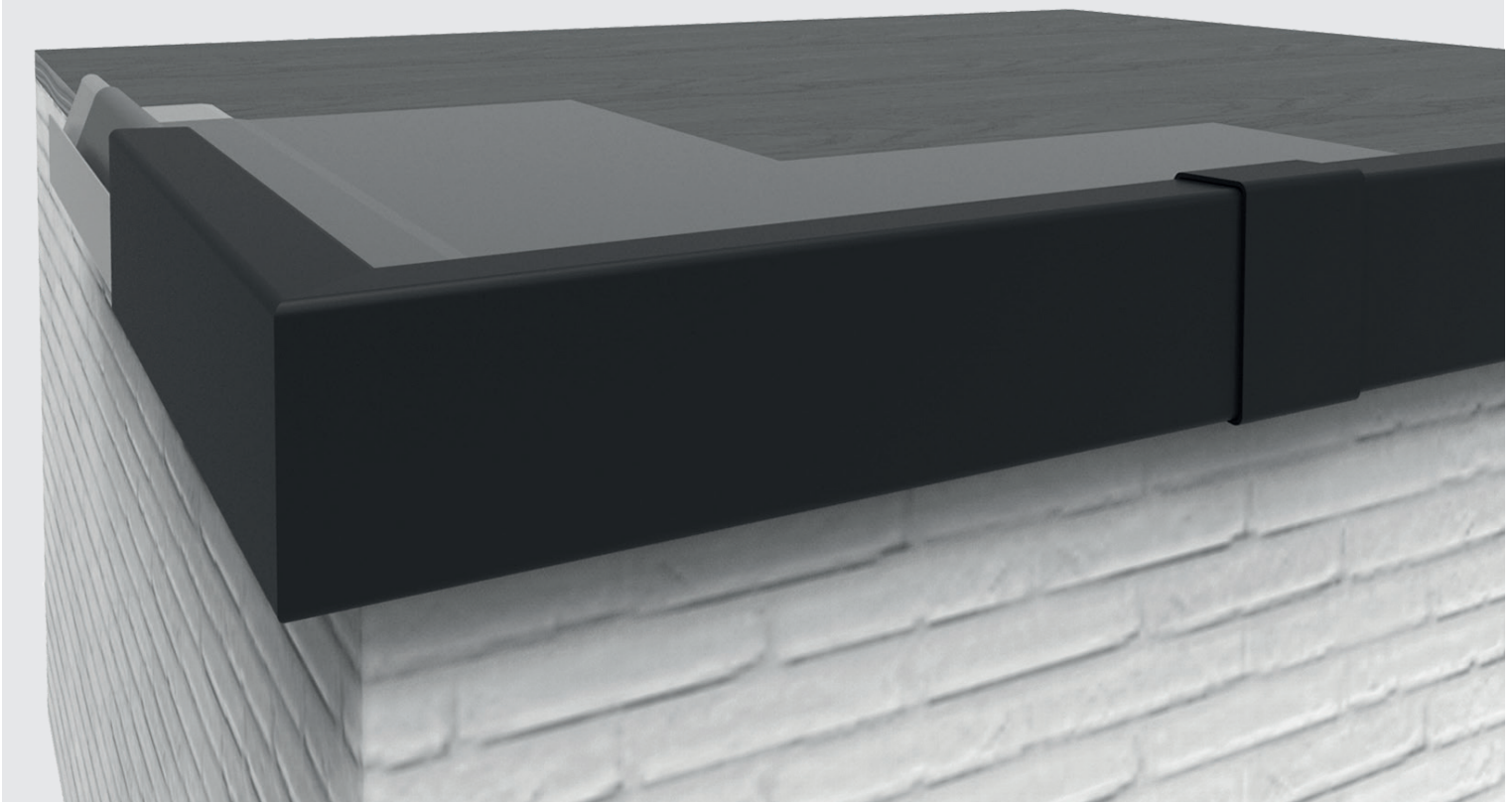
clips&go[®]

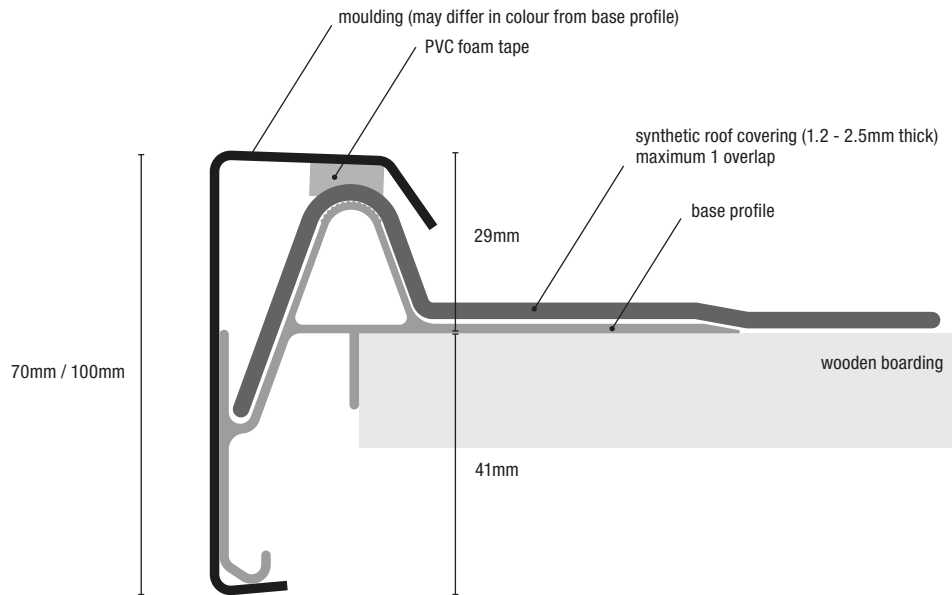
BY CLAERHOUT ALUMINIUM

2-piece aluminium roof edge system
(2D70 and 2D100 with the same base profile)

TECHNICAL DATA SHEET

v2020.02





DESCRIPTION

Comprises:

- Base profile in unwrought aluminium featuring a 60 mm effective bearing surface with pre-punched 6 x 16 mm oval holes. The base profile always comes in a standard 3,000 mm length.
- Moulding in aluminium with a height of 70 mm or 100 mm and a wall thickness of 1.5 mm fitted with rot-resistant PVC foam tape to ensure optimum clamping of the roof covering.
- 90° corner pieces (both outside and inside corners) measuring 300 mm by 300 mm made from aluminium mouldings.
- Easy corner accessory (80/80 mm effective) slides into the base profile at the corners for an optimum connection.
- 50 mm long joint clips to ensure a watertight joint finish.

APPLICATION

The Clips'n'go system is suitable for synthetic roof coverings with thicknesses ranging from 1.2 mm to a maximum of 2.5 mm. Max. 2 -layer thicknesses with overlaps

INSTALLATION

1. Attach the base profile every 300 mm using the pre-punched oval fixing holes. Always leave a 5 mm expansion joint between the base profiles.
2. Use the bumper to align the base profile with the existing cavity seal.
3. At the corners, slide the easy corner attachment into the 2 base profiles to create the corner. (figure 1)
4. Place the roof covering on the base profile. (Figure 2) Max 2-layer thicknesses in case of overlaps.
5. Clip the moulding from top to bottom (Figure 7) to secure the roof covering. Do not use lengths smaller than 1 m. Ensure a 5 mm expansion joint. Position the corners at the ends (figure 3&4) and then clip the corner piece downwards.
6. For expansion joints, apply a line of flexible sealant on both sides of the mouldings and clips, then the joint clips (figure 5) centred on the seam.

ALUMINIUM FINISH

All RAL colours are available.



